

**CITY OF WOODLAND PARK
HISTORICAL TAX COLLECTIONS**

October 2019

(unaudited)

Sales Tax Collection compared to prior years

MTD 2019 vs. MTD 2018 – 13.94% Increase

YTD 2019 vs. YTD 2018 – 5.55% increase

YTD 2019 vs. YTD 2017 – 12.26% increase

YTD 2019 vs. YTD 2016 – 17.72% increase

Lodging Tax Collection compared to prior years

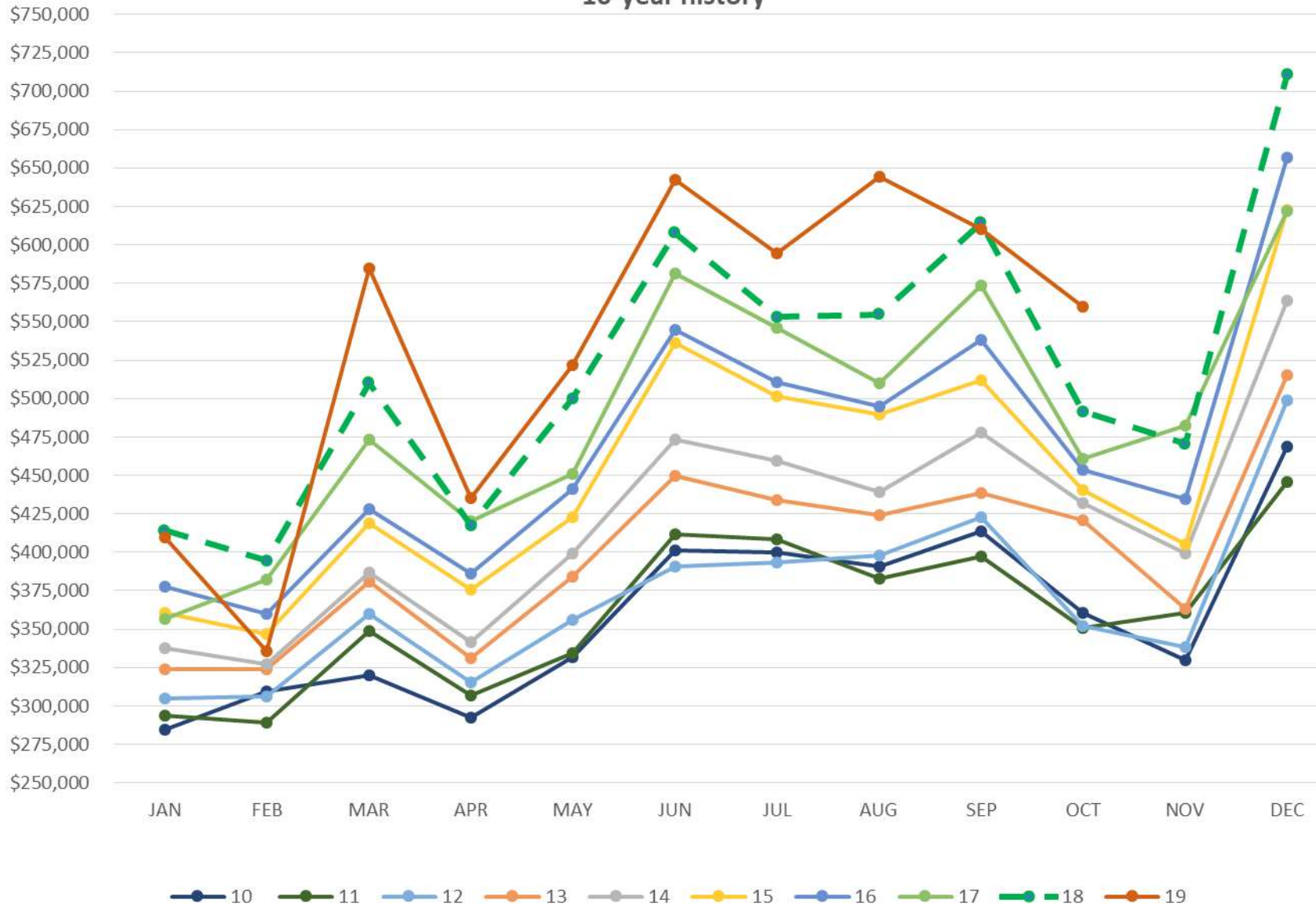
YTD 2019 vs. YTD 2018 – 2.22% increase

(see charts and tables below)

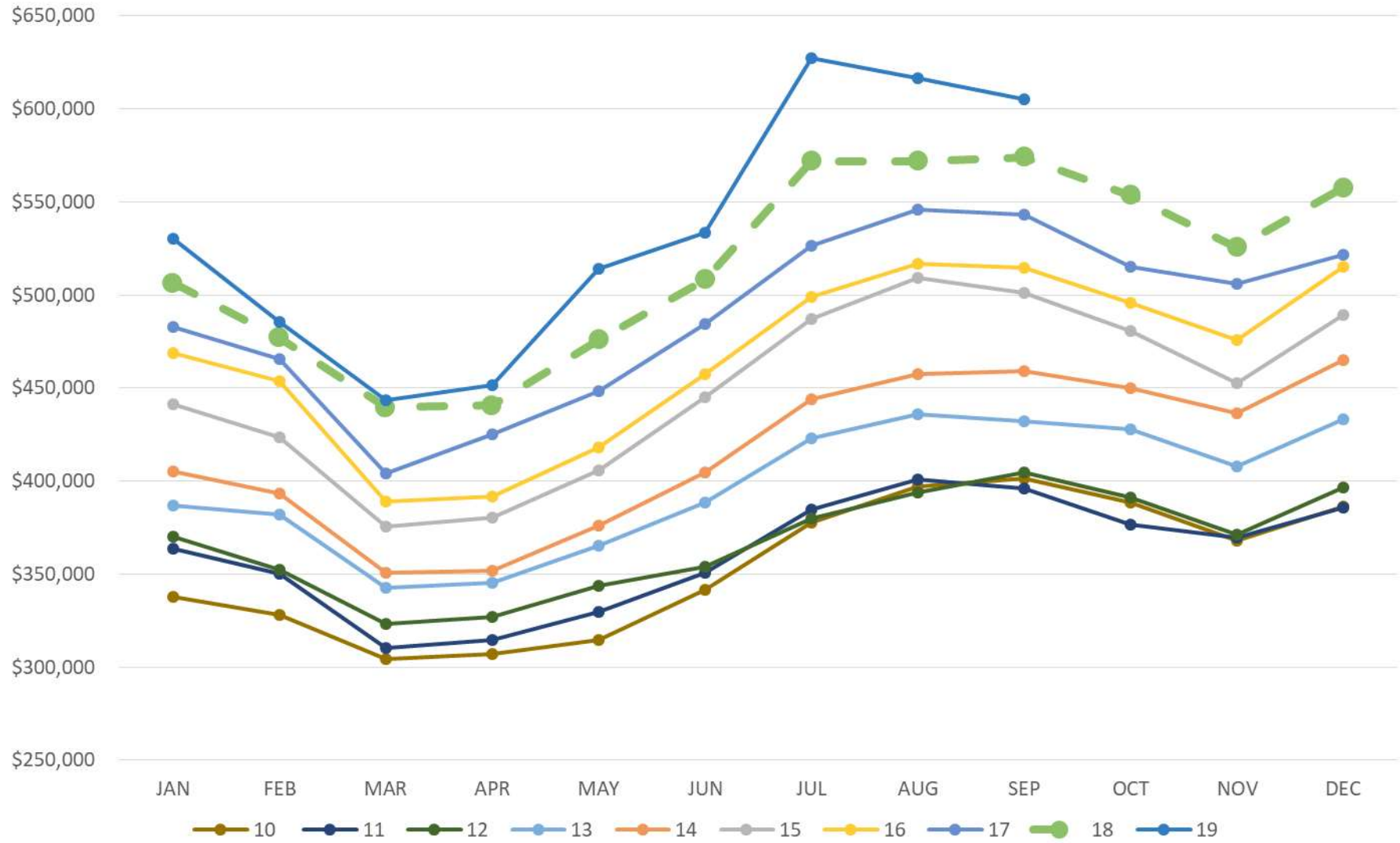
City of Woodland Park Sales Tax Collections 2016-2019



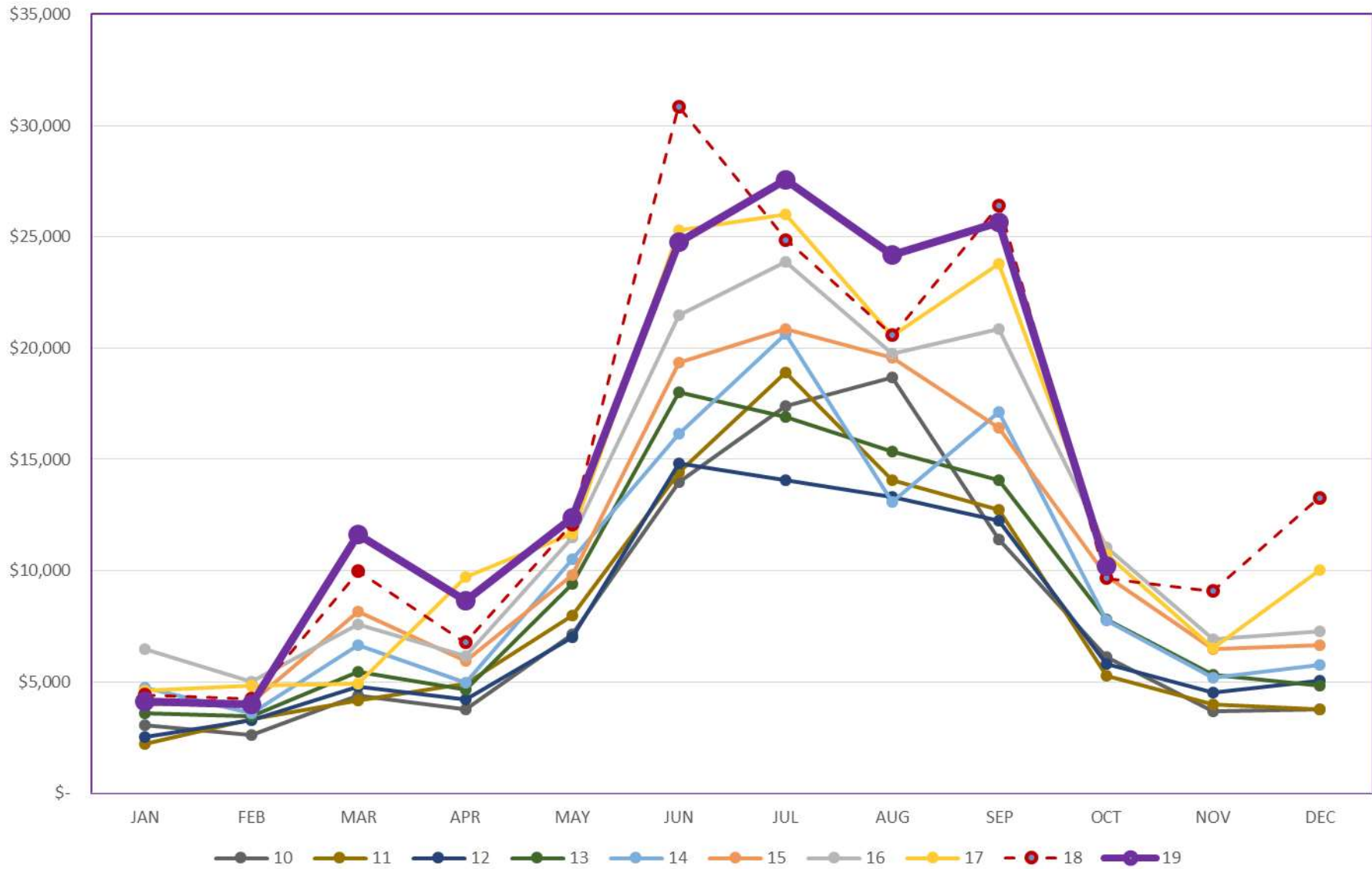
City of Woodland Park Sales Tax Collections 10-year history



**City of Woodland Park
Sales Tax Collections
Rolling 3-Month Average
10-Year History**



City of Woodland Park Lodging Tax Collections 5-Year History



Annual 3% Sales Tax Collection 10-Year History by Month (does not include the City's 1.09% sales tax for RE-2)

					Includes Sales Tax plus vendor fee.				
10	11	12	13	14	15	16	17	18	19
\$ 284,285	\$293,508	\$304,571	\$323,621	\$337,313	\$360,348	\$377,888	\$356,613	\$414,283	\$409,798
\$ 309,391	\$288,866	\$306,084	\$324,061	\$327,397	\$347,055	\$360,223	\$382,348	\$394,349	\$335,333
\$ 319,822	\$348,880	\$359,606	\$380,656	\$386,803	\$418,812	\$428,017	\$473,419	\$510,278	\$584,507
\$ 292,125	\$306,649	\$315,526	\$330,983	\$341,810	\$375,666	\$386,018	\$420,061	\$417,470	\$435,343
\$ 331,835	\$334,062	\$355,773	\$384,380	\$399,190	\$422,517	\$440,998	\$450,957	\$499,858	\$522,008
\$ 400,902	\$411,527	\$390,974	\$449,547	\$473,013	\$536,339	\$544,496	\$581,725	\$607,795	\$642,569
\$ 399,905	\$408,501	\$393,039	\$434,105	\$459,243	\$501,712	\$510,770	\$545,874	\$553,063	\$594,348
\$ 390,444	\$382,666	\$398,219	\$424,025	\$439,395	\$489,560	\$494,905	\$510,191	\$554,799	\$644,473
\$ 413,778	\$397,063	\$422,565	\$438,862	\$477,853	\$512,221	\$538,141	\$573,766	\$614,404	\$610,360
\$ 360,868	\$350,740	\$351,905	\$421,024	\$431,819	\$440,193	\$453,849	\$460,952	\$491,494	\$560,010
\$ 329,466	\$360,495	\$338,598	\$363,458	\$399,206	\$405,197	\$434,807	\$482,500	\$470,367	
\$ 468,430	\$445,725	\$498,801	\$514,984	\$563,532	\$622,513	\$657,016	\$622,098	\$710,516	
\$ 4,301,251	\$ 4,328,682	\$ 4,435,661	\$ 4,789,706	\$ 5,036,574	\$ 5,432,133	\$ 5,627,128	\$ 5,860,504	\$ 6,238,675	\$ 5,338,751
\$1,433,750	\$1,442,894	\$1,478,554	\$1,596,569	\$1,678,858	\$1,810,711	\$1,875,709	\$1,953,501	\$2,079,558	\$1,779,584
\$ 2,867,501	\$ 2,885,788	\$ 2,957,107	\$ 3,193,137	\$ 3,357,716	\$ 3,621,422	\$ 3,751,419	\$ 3,907,003	\$ 4,159,117	\$ 3,559,167

Annual Lodging Tax Collections 10-Year History by Month

	10	11	12	13	14	15	16	17	18	19
JAN	\$ 3,063	\$ 2,201	\$2,539	\$3,571	\$4,734	\$4,003	\$6,484	\$4,604	\$4,417	\$4,136
FEB	\$ 2,624	\$ 3,325	\$3,258	\$3,458	\$3,578	\$4,067	\$5,031	\$4,836	\$4,253	\$3,990
MAR	\$ 4,370	\$ 4,169	\$4,786	\$5,438	\$6,630	\$8,166	\$7,595	\$4,936	\$9,938	\$11,623
APR	\$ 3,786	\$ 4,922	\$4,192	\$4,648	\$4,947	\$5,924	\$6,177	\$9,705	\$6,768	\$8,666
MAY	\$ 7,122	\$ 7,982	\$6,998	\$9,411	\$10,522	\$9,799	\$11,504	\$11,652	\$12,073	\$12,368
JUN	\$ 13,961	\$ 14,425	\$14,814	\$17,999	\$16,144	\$19,332	\$21,492	\$25,295	\$30,867	\$24,744
JUL	\$ 17,386	\$ 18,909	\$14,078	\$16,913	\$20,630	\$20,852	\$23,862	\$25,998	\$24,867	\$27,564
AUG	\$ 18,699	\$ 14,056	\$13,330	\$15,350	\$13,101	\$19,589	\$19,739	\$20,545	\$20,572	\$24,198
SEP	\$ 11,406	\$ 12,718	\$12,267	\$14,067	\$17,127	\$16,412	\$20,863	\$23,805	\$26,415	\$25,655
OCT	\$ 6,117	\$ 5,270	\$5,825	\$7,796	\$7,764	\$9,761	\$11,038	\$10,748	\$9,656	\$10,207
NOV	\$ 3,675	\$ 4,010	\$4,516	\$5,325	\$5,185	\$6,490	\$6,936	\$6,524	\$9,092	
DEC	\$ 3,752	\$ 3,780	\$5,055	\$4,851	\$5,749	\$6,658	\$7,276	\$10,016	\$13,281	
TOTAL	\$ 95,961	\$ 95,767	\$91,658	\$108,827	\$116,111	\$131,053	\$147,997	\$158,664	\$172,198	\$153,152