

**CITY OF WOODLAND PARK  
HISTORICAL TAX COLLECTIONS**

**February 2021**

(unaudited)

**Sales Tax Collection compared to prior years**

MTD 2020 vs. MTD 2021– 17% increase

YTD 2021 vs. YTD 2020 – 13% increase

YTD 2021 vs. YTD 2019 – 37% increase

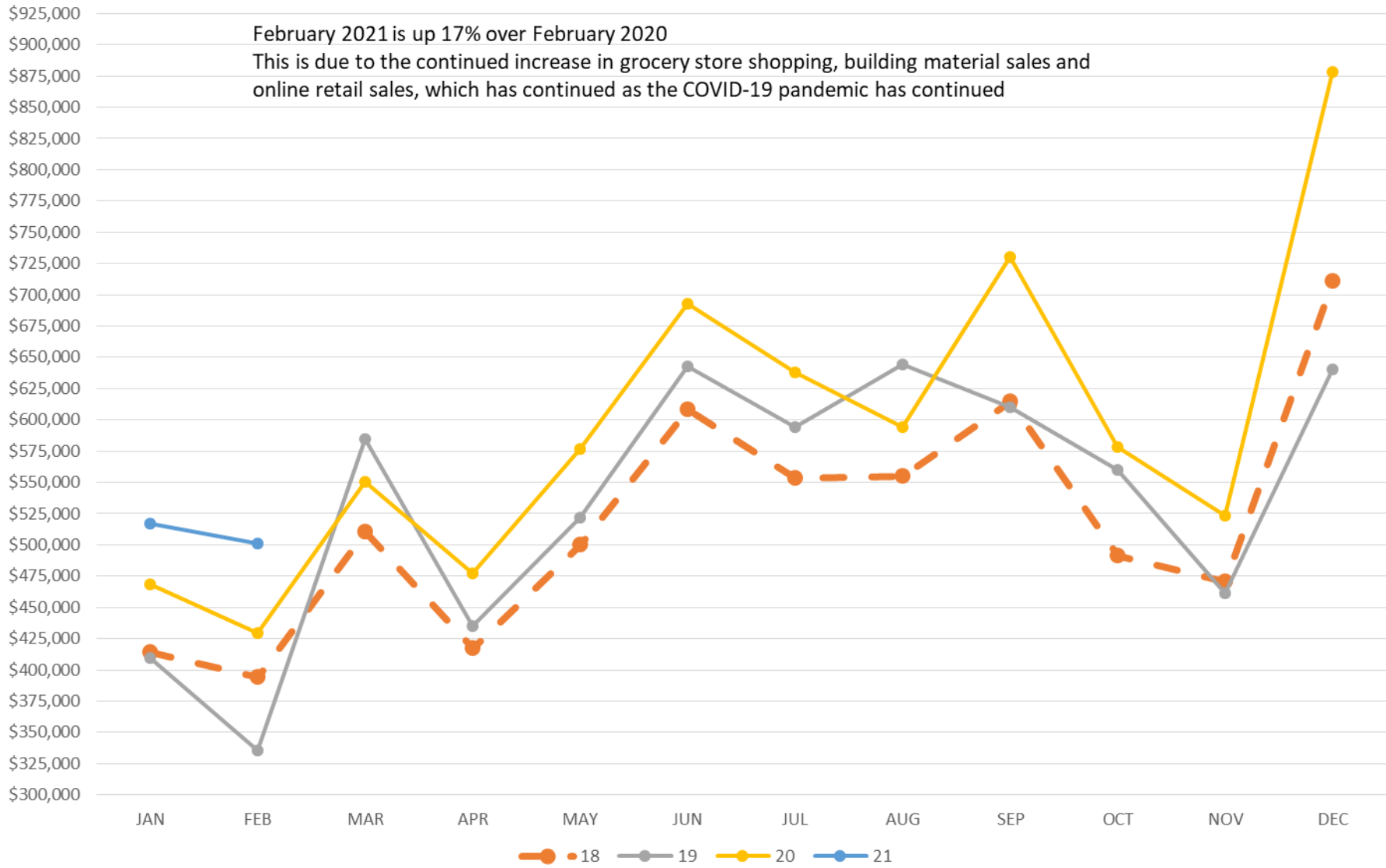
YTD 2021 vs. YTD 2018 – 26% increase

**Lodging Tax Collection compared to prior years**

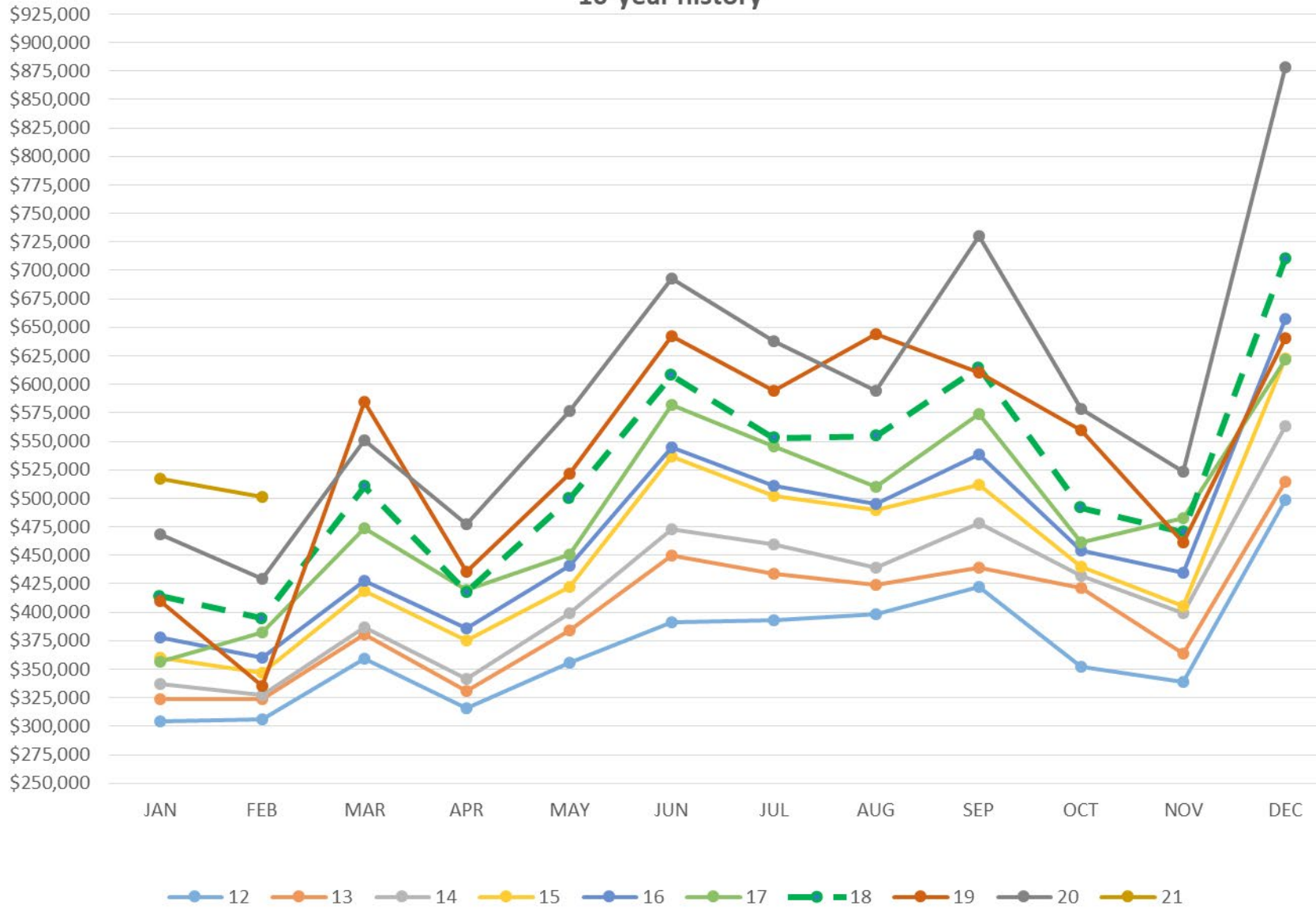
YTD 2021 vs. YTD 2020 – 40% increase

(see charts and tables below)

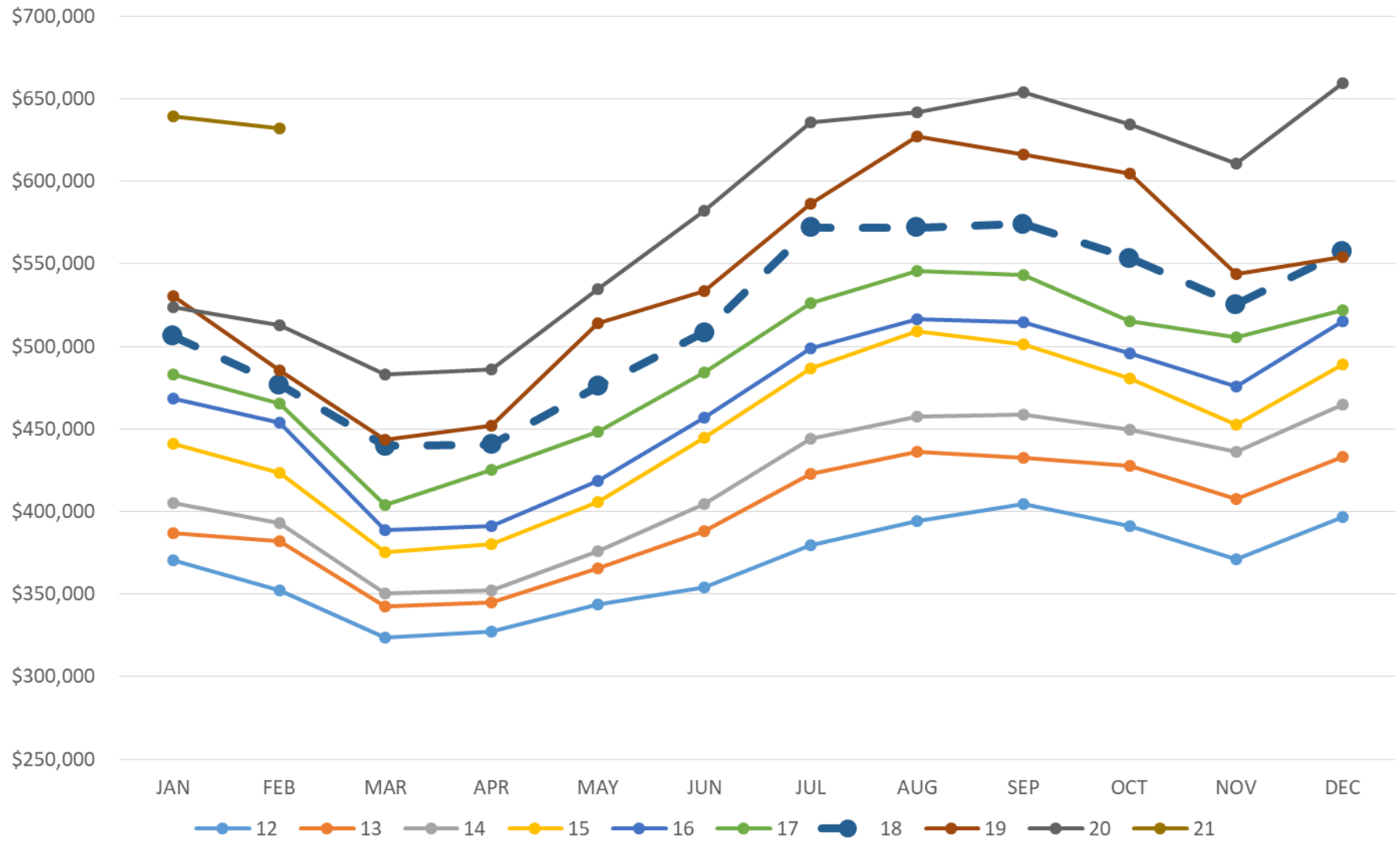
## City of Woodland Park Sales Tax Collections 2018-2021



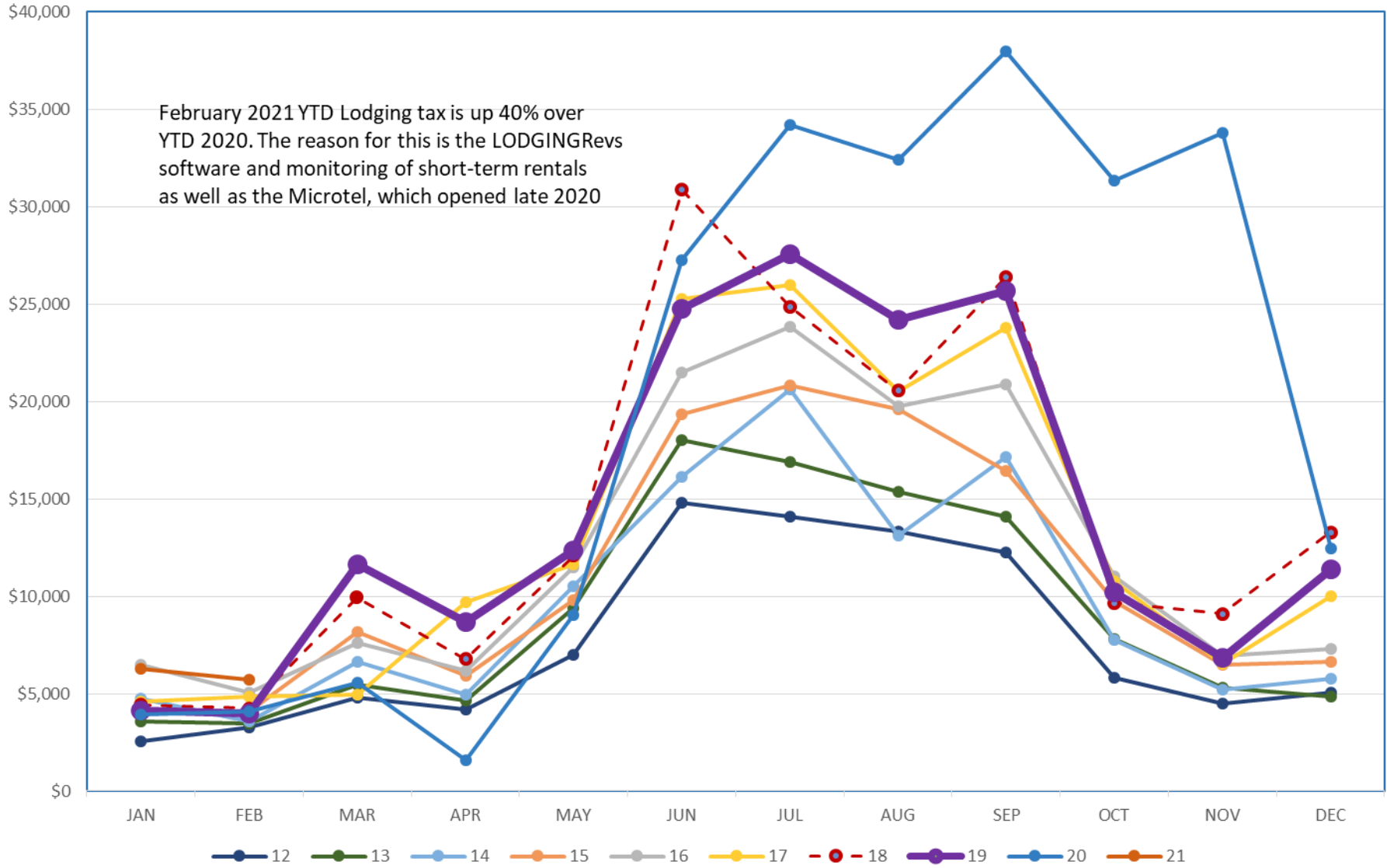
### City of Woodland Park Sales Tax Collections 10-year history



**City of Woodland Park  
Sales Tax Collections  
Rolling 3-Month Average  
10-Year History**



### City of Woodland Park Lodging Tax Collections 10-Year History



**Annual 3% Sales Tax Collection 10-Year History by Month** (does not include the City's 1.09% sales tax for RE-2)

	12	13	14	15	16	17	18	19	20	21
JAN	\$304,571	\$323,621	\$337,313	\$360,348	\$377,888	\$356,613	\$414,283	\$409,798	\$468,475	\$517,293
FEB	\$306,084	\$324,061	\$327,397	\$347,055	\$360,223	\$382,348	\$394,349	\$335,333	\$429,745	\$501,107
MAR	\$359,606	\$380,656	\$386,803	\$418,812	\$428,017	\$473,419	\$510,278	\$584,507	\$550,768	
APR	\$315,526	\$330,983	\$341,810	\$375,666	\$386,018	\$420,061	\$417,470	\$435,343	\$477,439	
MAY	\$355,773	\$384,380	\$399,190	\$422,517	\$440,998	\$450,957	\$499,858	\$522,008	\$576,357	
JUN	\$390,974	\$449,547	\$473,013	\$536,339	\$544,496	\$581,725	\$607,795	\$642,569	\$692,663	
JUL	\$393,039	\$434,105	\$459,243	\$501,712	\$510,770	\$545,874	\$553,063	\$594,348	\$637,881	
AUG	\$398,219	\$424,025	\$439,395	\$489,560	\$494,905	\$510,191	\$554,799	\$644,473	\$594,142	
SEP	\$422,565	\$438,862	\$477,853	\$512,221	\$538,141	\$573,766	\$614,404	\$610,360	\$730,476	
OCT	\$351,905	\$421,024	\$431,819	\$440,193	\$453,849	\$460,952	\$491,494	\$560,010	\$578,061	
NOV	\$338,598	\$363,458	\$399,206	\$405,197	\$434,807	\$482,500	\$470,367	\$461,604	\$523,004	
DEC	\$498,801	\$514,984	\$563,532	\$622,513	\$657,016	\$622,098	\$710,516	\$640,506	\$877,951	
TOTALS	\$ 4,435,661	\$ 4,789,706	\$ 5,036,574	\$ 5,432,133	\$ 5,627,128	\$ 5,860,504	\$ 6,238,675	\$ 6,440,861	\$ 7,136,962	\$ 1,018,400
1% amount	\$1,478,554	\$1,596,569	\$1,678,858	\$1,810,711	\$1,875,709	\$1,953,501	\$2,079,558	\$2,146,954	\$2,378,987	\$339,467
2% amount	\$ 2,957,107	\$ 3,193,137	\$ 3,357,716	\$ 3,621,422	\$ 3,751,419	\$ 3,907,003	\$ 4,159,117	\$ 4,293,907	\$ 4,757,975	\$ 678,933

### Annual Lodging Tax Collections 10-Year History by Month

	12	13	14	15	16	17	18	19	20	21
JAN	\$2,539	\$3,571	\$4,734	\$4,003	\$6,484	\$4,604	\$4,417	\$4,136	\$3,944	\$6,295
FEB	\$3,258	\$3,458	\$3,578	\$4,067	\$5,031	\$4,836	\$4,253	\$3,990	\$4,071	\$5,718
MAR	\$4,786	\$5,438	\$6,630	\$8,166	\$7,595	\$4,936	\$9,938	\$11,623	\$5,576	
APR	\$4,192	\$4,648	\$4,947	\$5,924	\$6,177	\$9,705	\$6,768	\$8,666	\$1,598	
MAY	\$6,998	\$9,411	\$10,522	\$9,799	\$11,504	\$11,652	\$12,073	\$12,368	\$9,046	
JUN	\$14,814	\$17,999	\$16,144	\$19,332	\$21,492	\$25,295	\$30,867	\$24,744	\$27,267	
JUL	\$14,078	\$16,913	\$20,630	\$20,852	\$23,862	\$25,998	\$24,867	\$27,564	\$34,220	
AUG	\$13,330	\$15,350	\$13,101	\$19,589	\$19,739	\$20,545	\$20,572	\$24,198	\$32,413	
SEP	\$12,267	\$14,067	\$17,127	\$16,412	\$20,863	\$23,805	\$26,415	\$25,655	\$37,969	
OCT	\$5,825	\$7,796	\$7,764	\$9,761	\$11,038	\$10,748	\$9,656	\$10,207	\$31,347	
NOV	\$4,516	\$5,325	\$5,185	\$6,490	\$6,936	\$6,524	\$9,092	\$6,843	\$33,788	
DEC	\$5,055	\$4,851	\$5,749	\$6,658	\$7,276	\$10,016	\$13,281	\$11,361	\$12,432	
TOTAL	\$91,658	\$108,827	\$116,111	\$131,053	\$147,997	\$158,664	\$172,198	\$171,357	\$233,670	\$12,013